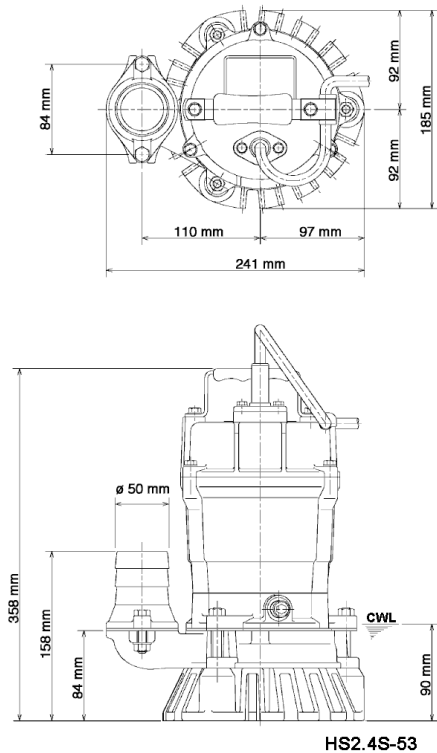
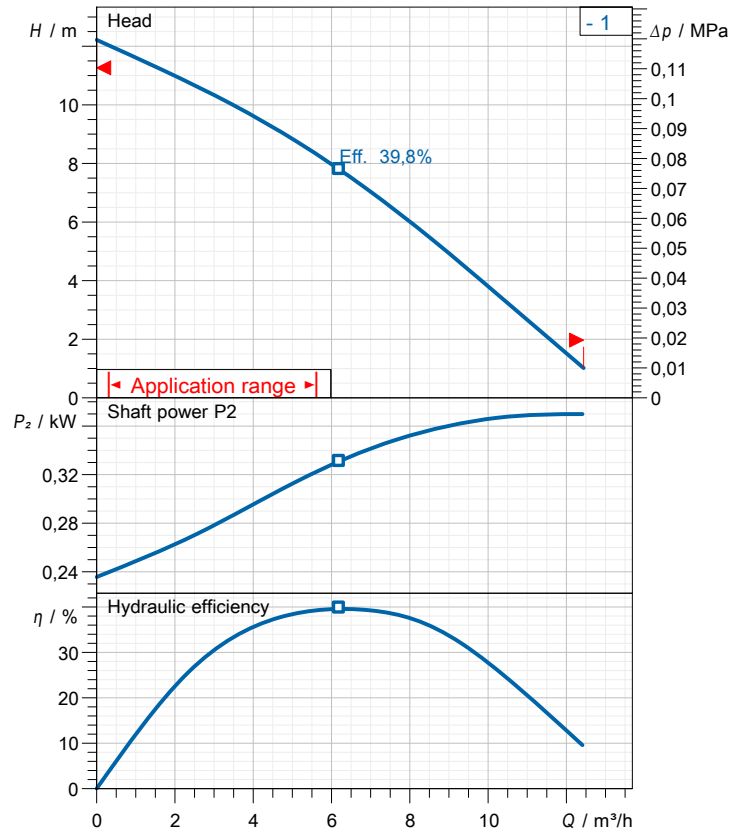


Data sheet HS2.4S-53



CWL: Continuous running water level



Specification

Elektrische Tauchpumpe HS-Serie
 Degree of protection IP 68
 Pressure resistance max. 10 m
 Type of impeller semi-vortex
 Max. solid handling 7 mm
 Suitable for:
 rain water, ground water, sand water

Electric motor

Dry-type submersible induction motor
 Insulation class E 2Poles 2723 1/min
 Starting mode
 Rated voltage 230 V 50 Hz 1~
 Power uptake 0,58 kW
 Rated power 0,40 kW
 Rated current 2,6 A
 Start current

Cable

H07RN-F 3Cx1mm²

Motor Protection

Miniature protector in windings
 (snap-action bi-metal device)

Shaft seal

Double inside mechanical seal in oil bath
 additional lubrication by oil lifting device
 Primary seal
 Silicon carbide on silicon carbide
 Secondary seal
 Carbon on ceramic

Bearings

Shielded ball bearings, maintenance-free

Materials

Impeller	Urethane rubber
Pump casing	FCD700 (EN-GJS-700-2)
Motor Frame	Aluminium die casting
Shaft	SUS403 (EN-X6Cr13)

Discharge size

2" (50mm) BS-Coupling (threaded flange)

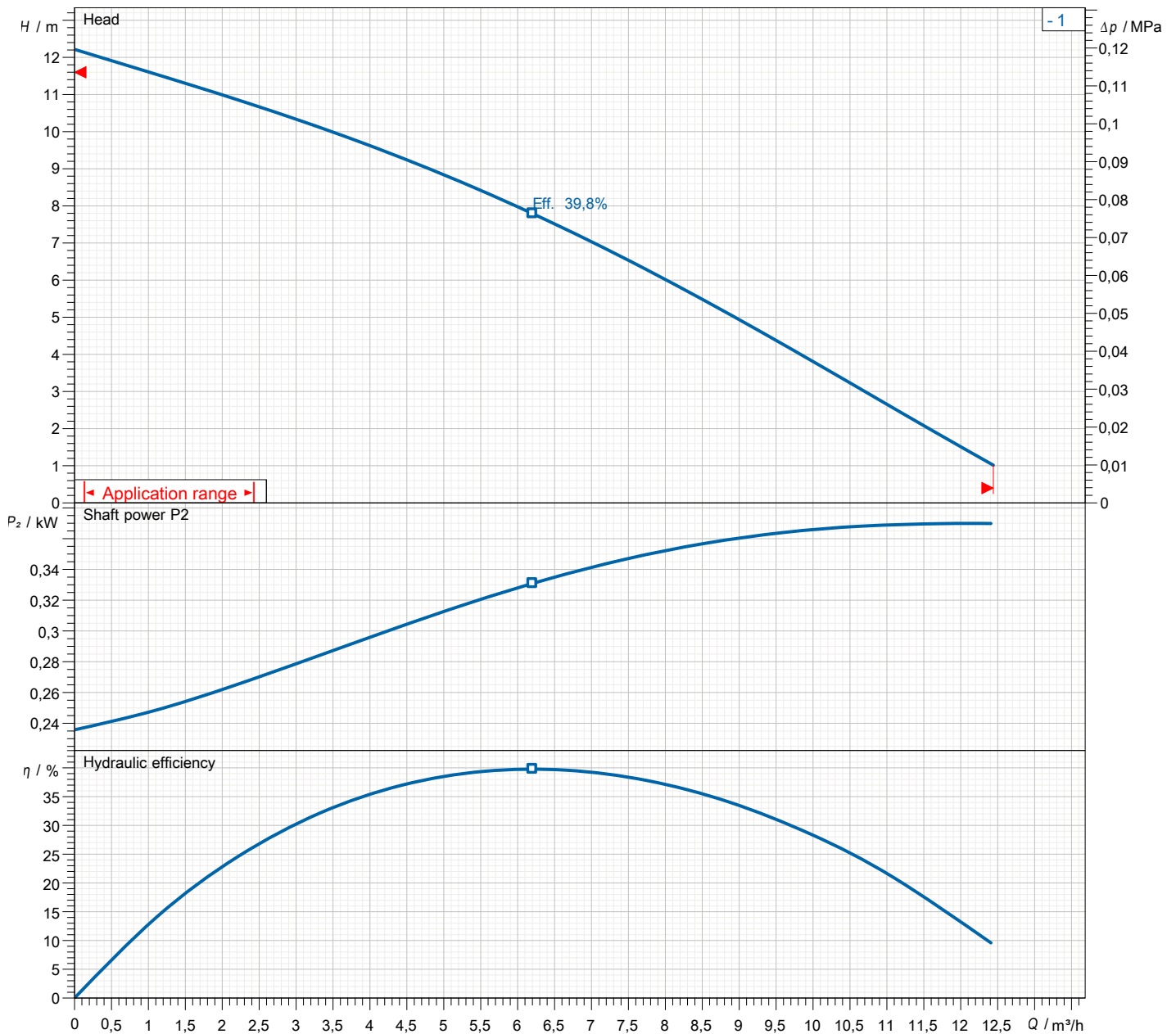
Weight

11,3 kg (dry weight of the pump only without cable)

Performance curve

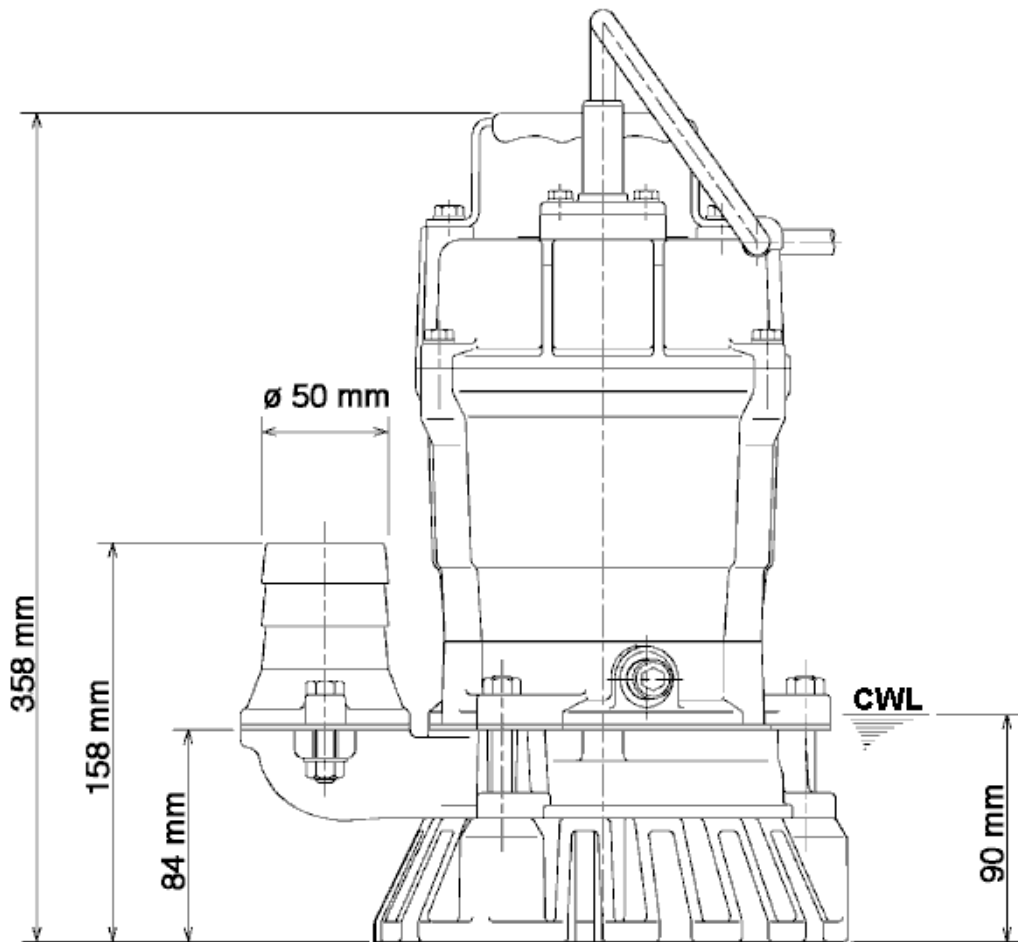
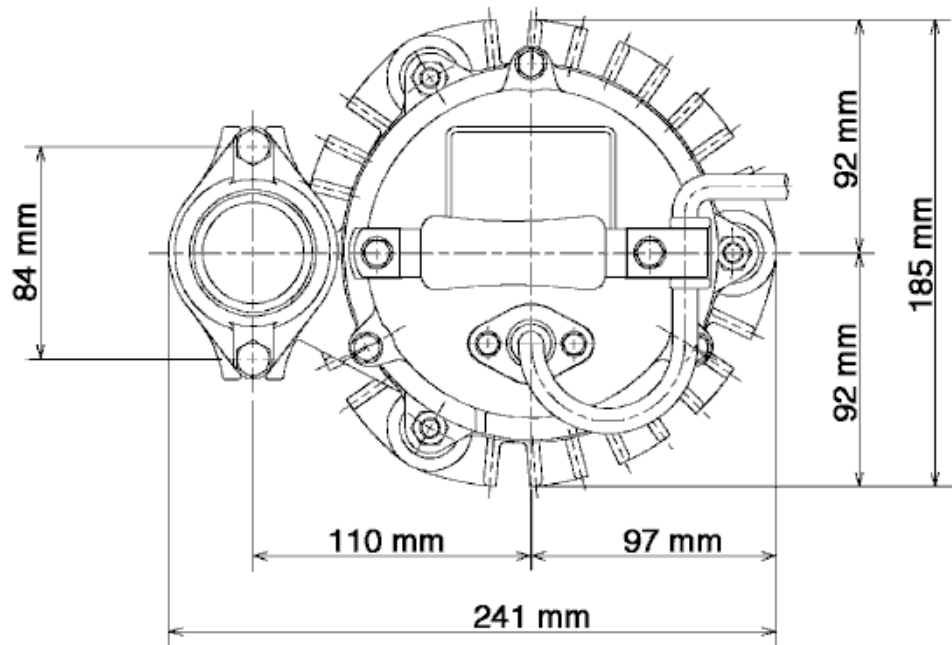
HS2.4S-53

Discharge port	2"
FördH	12,2 m
Flow	12,4 m³/h
Rated power	0,40 kW
Power input	0,58 kW
Phases	1~
Voltages	230 V
Frequency	50 Hz
Rated current	2,6 A
Starting current	
Number of poles	2
Speed	2723 1/min
Starting mode	
Insulation class	E



Dimensions

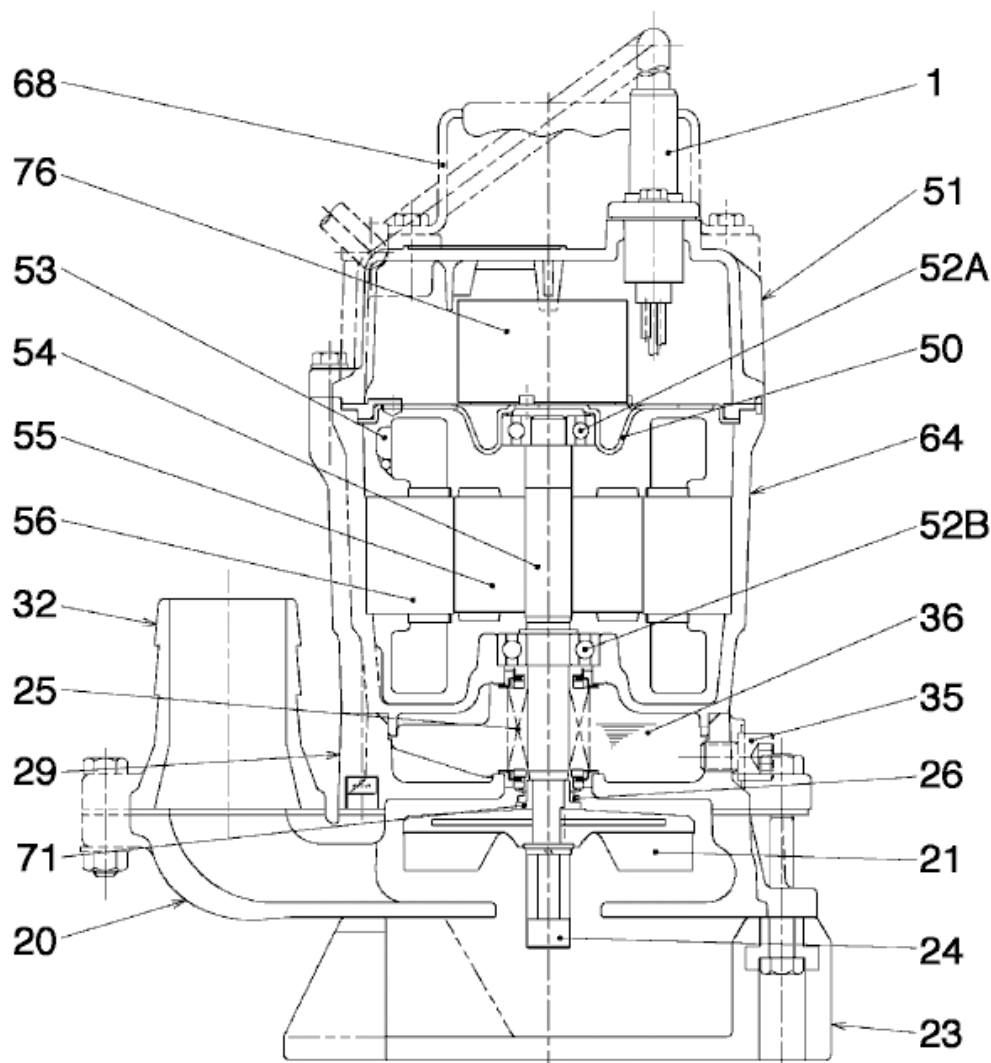
HS2.4S-53



HS2.4S-53

CWL: Continuous running water level
LWL: Lowest running water level

Sectional drawing HS2.4S-53



HS2.4S-53

No.	Description	Remark	No.	Description	Remark
1	Cable	H07RN-F3Cx1mm=x10m	54	Shaft	SUS403 (EN-X6Cr13)
20	Pump casing	FCD700 (EN-GJS-700-2)	55	Rotor	.
21	Impeller	Urethane rubber	56	Stator	.
23	Strainer	PVC	64	Motor Frame	Aluminium die casting
24	Agitator	Sintered alloy	68	Handle	Steel plate / natural rubber
25	Mechanical seal	W-14VL	71	Shaft protection sleeve	SUS304 (EN-X5CrNi18-10)
26	V-ring	Butadiene-acrylonitrile-rubber	76	Condenser	.
29	Oil casing	FC200 (EN-GJL-200)			
32	Discharge coupling	Aluminium die casting			
35	Oil screw	SUS304 (EN-X5CrNi18-10)			
36	Lubricant	Turbine oil (ISO VG32)			
50	Motor cover	Steel plate			
51	Main cover	Aluminium die casting			
52A	Upper bearing	6201ZZC3			
52B	Lower bearing	6202ZZC3			
53	Motor Protector 380/400/415V-50Hz	KA314-HRXL00 (H.C)			